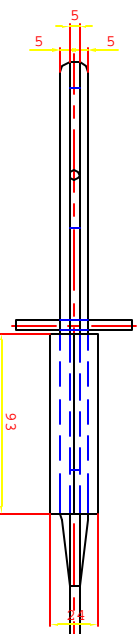
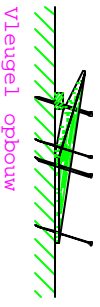
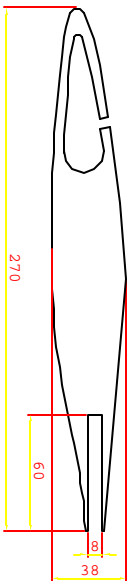


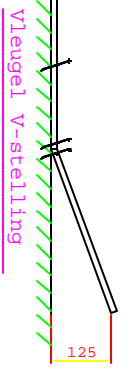
Vleugel (vlak)



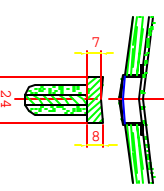
Romp bovenaanzicht



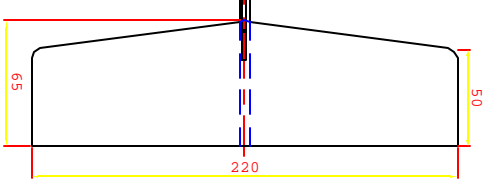
Romp kernplaat



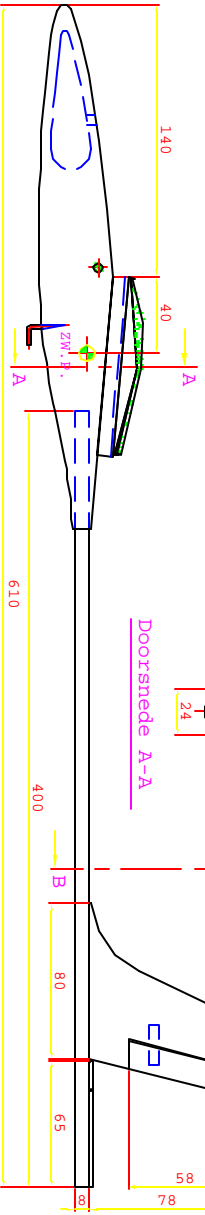
Vleugel V-stelling



Doorsnede A-A



Doorsnede B-B



Romp zij aanzicht

ROBBE - FANTRA	
Spanwijdte :	725mm
Romp lengte :	610mm
Vleugelopp. :	6,42 dm ²
Stabi lo opp. :	1,26 dm ²
Totaal opp. :	7,68 dm ²
Gewicht :	ca. 100 gr.
Opdr. nr. 1010004	Naam: 22-06-2006
schakel: 311	omw134: